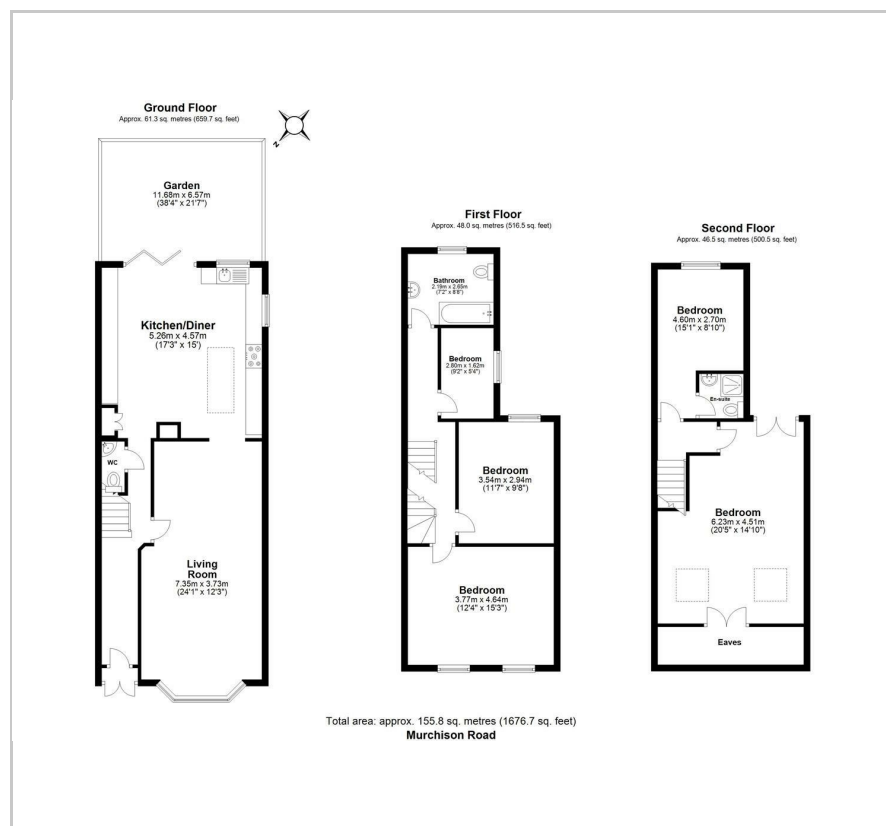


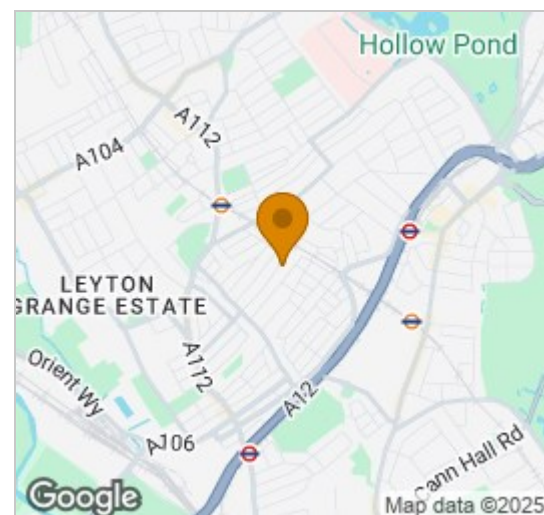


291 Murchison Road
 , London, E10 6LT
 Offers in excess of £850,000

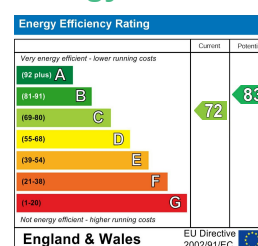
Floor Plan



Area Map



Energy Efficiency Graph



Viewing

Please contact our E10 Homes Office on 02081276490 if you wish to arrange a viewing appointment for this property or require further information.

- LARGE FIVE BEDROOM ■ IMMACULATE THROUGHOUT VICTORIAN HOME
- 5 MINS TO FRANCIS ROAD ■ PRIVATE GARDEN
- 10 MINS TO LEYTONSTONE ■ FOLLOW US ON INSTAGRAM @E10HOMES_LEYTON

A wonderful find, expertly developed and immaculately finished over three storeys and almost 1700 square feet. You have dual bathrooms and handy side access with extra storage. Transport, nightlife and nature all within easy reach.

Everything's held to an impeccable standard throughout, with the substantial through lounge leading seamlessly into that bright and skylit kitchen/diner, in turn giving way to your private rear garden. Upstairs it's all just as impressive.

Leyton's artisanal coffee spot destination of Francis Road is just five minutes away at the end of your street. Leyton High Road, for a wide choice of bars and pubs, is just another five minutes away, while Leytonstone tube is half a mile on foot.

YOUR NEW HOME

Step through the handy storm porch and that twenty-four foot through lounge stretches away on your right. Immaculate broad engineered oak flooring runs underfoot and pristine white walls make the most of the light streaming in through the leaded bay window.

Bespoke open shelving sits to the rear, alongside a step down into your similarly substantial kitchen/diner –



These particulars, whilst believed to be accurate are set out as a general outline only for guidance and do not constitute any part of an offer or contract. Intending purchasers should not rely on them as statements of representation of fact, but must satisfy themselves by inspection or otherwise as to their accuracy. No person in this firm's employment has the authority to make or give any representation or warranty in respect of the property.

226 Francis Road, Leyton, E10 6NQ

Tel: 02081276490 Email: info@e10homes.co.uk <https://www.e10homes.co.uk>